



GMT MONTHLY MEMBERSHIP PROGRESS REPORT

Results as of: 11/30/2023

Multiple District 13

LOCATION: OHIO

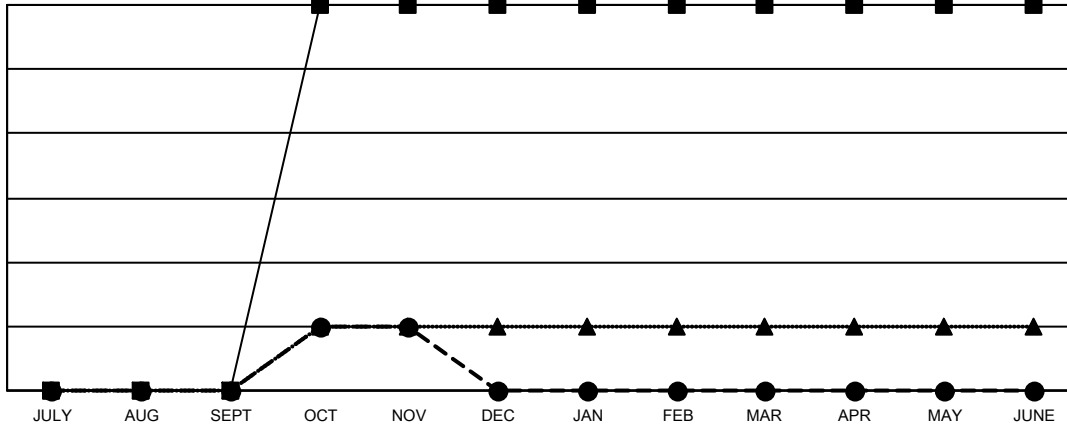
GMT: OPEN

GMT CA 1

| Clubs | | | |
|-----------------------|---------------|-----------|---------------|
| RESULTS FOR 2023-2024 | | | |
| QUARTER | NEW CLUB GOAL | NEW CLUBS | DROPPED CLUBS |
| JULY/AUG/SEPT | 0 | 0 | 5 |
| OCT/NOV/DEC | 6 | 1 | 0 |
| JAN/FEB/MAR | 0 | 0 | 0 |
| APR/MAY/JUNE | 0 | 0 | 0 |

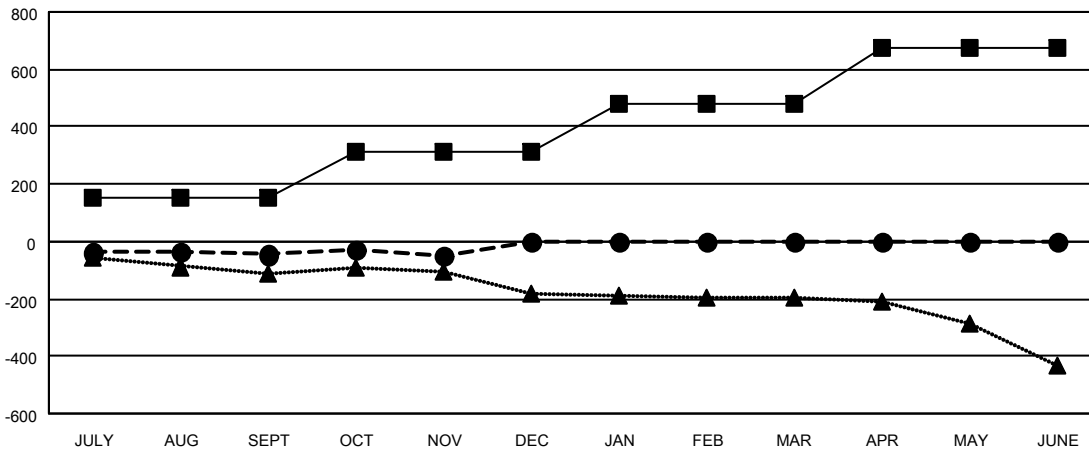
| Members | | | |
|-----------------------|------------------------|----------------------|--|
| RESULTS FOR 2023-2024 | | | |
| QUARTER | MEMBER GROWTH NET GOAL | MEMBER GROWTH ACTUAL | DROPPED MEMBERS ACTUAL (including transfers) |
| JULY/AUG/SEPT | 150 | 221 | 236 |
| OCT/NOV/DEC | 162 | 186 | 181 |
| JAN/FEB/MAR | 170 | 0 | 0 |
| APR/MAY/JUNE | 194 | 0 | 0 |

GOALS AND ACTUAL NEW CLUBS CUMULATIVE



- - CURRENT YEAR GOALS FOR NEW CLUBS
- - CURRENT YEAR ACTUAL NEW CLUBS
- ▲ - LAST YEAR ACTUAL NEW CLUBS

GOALS AND ACTUAL MEMBERS CUMULATIVE



- - MEMBER GROWTH NET GOAL
- - MEMBER GROWTH ACTUAL
- ▲ - LAST YEAR MEMBERSHIP ACTUAL

| | | |
|-------------------------|--|--|
| DROPPED CLUBS: 5 | 144 CLUBS OF 360 ADDED 1 OR MORE NEW MEMBERS | GENDER DISTRIBUTION MALE 6,614 (68.26%) FEMALE 3,076 (31.74%) |
| | DROPPED MEMBERS DECEASED 73 CLUB CANCELLED 0 OTHER 344 TOTAL 417 | CLICK HERE FOR CUMULATIVE MEMBERSHIP DATA |